

SIB-8

Shallow Inset Light Base - 8" Aluminum - ICAO



SIB

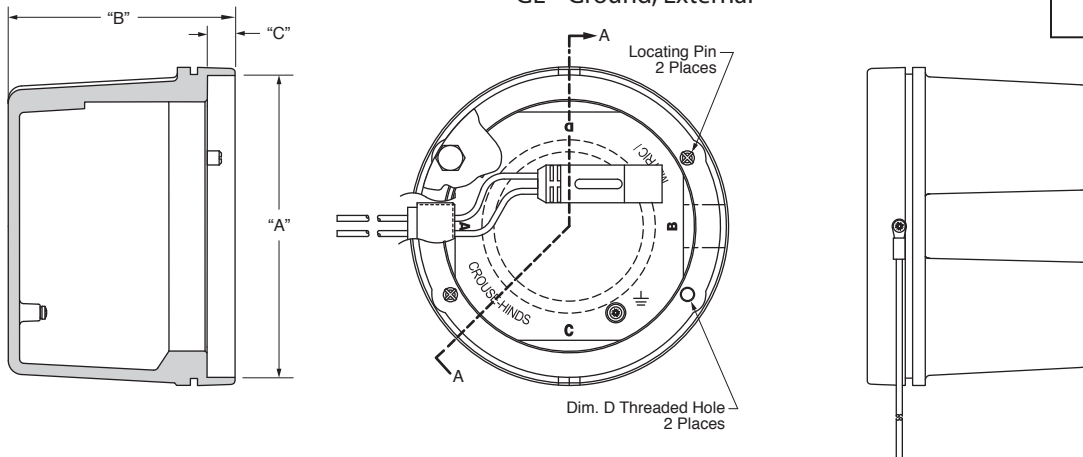
Applications

The SIB is a load-bearing light base designed in compliance with requirements of FAA Advisory Circular AC 150/5345-42 and IEC TS 61827 for direct mounting of 203mm (8") inset light fixtures.

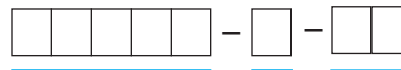
Features

- Anodized cast aluminum construction
- Vertical casting recesses prevent rotation in pavement when set into epoxy.
- Secondary plug(s) inside the base for ease of maintenance and light fixture removal
- Mechanical feed-thru with watertight seal

Outline Drawing



Ordering Information



Fixture Type:

- 21378
- 21388
- 21390
- 21431

Connection Type:

- 1 = One feed-thru (2 conductors) entry at location "A" in Base side
- 2 = Two feed-thru (4 conductors) entry at location "A" & "B" in Base side
- 3 = Bottom entry thru 3.94 DIA (100mm) in casting center
- 4 = Bottom entry thru 4.57 DIA (116mm) in casting center, no internal

Option:

GE = Ground, External

Accessory

P/N 87106-1 Installation Fixture

Dimensions:	inches (mm)
Shipping Weight:	9.0 lbs 4.1 kg
Shipping Volume:	1.0 cu ft 0.028 m ³

Basic Catalog Number	Instruction Manual	Dim. A	Dim. B	Dim. C	Dim. D	Fixture Reference
21378	2633	8.03 (203.9)	5.91 (150.0)	0.63 (16.0)	M10	TCLI/TOL-008
21388	2712	8.03 (203.9)	5.94 (150.9)	0.53 (13.5)	M10	RCLI/TDZI
21390	2713	8.03 (203.9)	6.00 (152.5)	0.74 (18.7)	M10	TCLI/TOL-008
21431	2730	8.03 (203.9)	5.91 (150.0)	0.63 (16.0)	3/8-16 UNC	TOL-008

