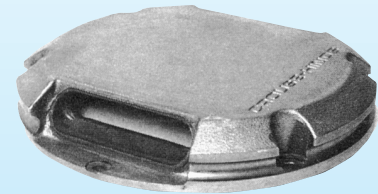


RTEL

Runway Threshold and End Light



RTEL

Compliances: FAA AC 150/5345-46: L-850D
ICAO Annex 14
UFC 3-535-01

Applications

The RTEL is a high intensity bidirectional light used on runways where the threshold and end lighting are co-located. The green threshold light's main beam may be straight or toed-in 3.5 degrees. The red runway end light has a straight beam. The two lamps are typically connected to separate circuits with the red side operated by the runway edge lighting circuit.

Features



- ETL Certified
- FAA Approved L-850D
- Proven reliability
- Variety of mounting methods
- Optional high-strength casting approximately double the tensile strength of ductile iron
- Optional metallic-ceramic coating for increased corrosion resistance

Application Notes

- Sectional Class I bases may be required for proper installation.
- Size B fixtures require that the bases be installed with any two opposite mounting bolt holes parallel to the runway centerline.

Ordering Information

How to Order: Select the number of leads to match the number of isolation transformers to be used. Choose the letter to match the base size to be installed. Add designations for the lamp wattage and colors. The orientation of the color symbols determines the optical beam toe-in.

Example: An 850D2-C-185-RG is a bidirectional threshold and end light with right toe-in on the green beam and a straight red beam. It mounts on a 14.25-inch bolt circle base. This fixture is furnished with two 185 watt lamps. It has two leads for making connections with two 200 watt isolation transformers.



Fixture Type:

Number of Leads:
1 or 2 with L-823 plugs

Base Size:
B = 11.25-inch bolt circle
C = 14.25-inch bolt circle

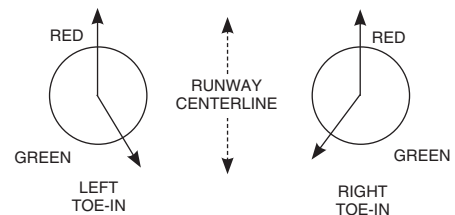
Lamp Wattage:
185 = 2 x 185 W lamps

Color/Color:**
G = Green/Clear
R = Red/Blank

Beam Orientation:
S = Straight beams both sides
No symbol means there is toe-in**

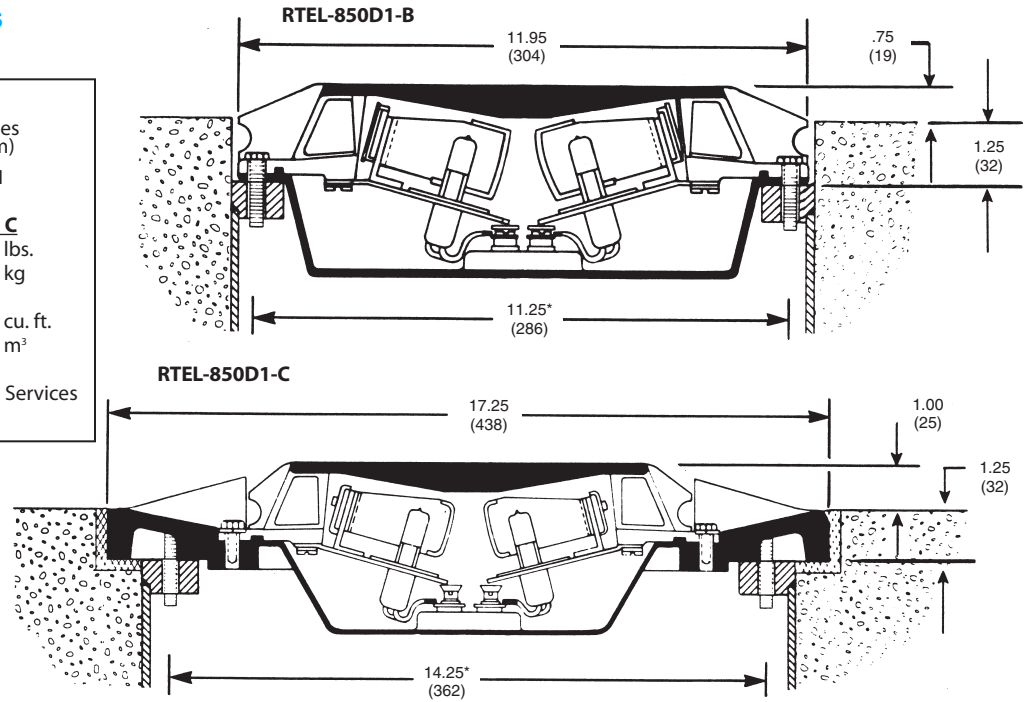
Options:
NM = High-Strength Casting
CR = Corrosion Resistant Coating

** Refer to the color symbol position:
The red beam is always straight.
The first color is left toe-in;
The second color is right toe-in.



Installation Drawings

Dimensions:	inches (mm)	
Instruction Manual:	8401	
	Size B	Size C
Shipping Weight:	55.0 lbs. 25.0 kg	90.0 lbs. 41.0 kg
Shipping Volume:	0.75 cu. ft. .021 m ³	1.00 cu. ft. 0.32 m ³
Photometric Data:	Contact Field Services	



* Diameter for six (6) equally spaced bolts.

Accessories

Catalog Number	Item Description	Shipping Weight		Shipping Volume	
		Lbs.	kg	Cu. Ft.	m ³
AC24242Q200303	Base: L-868B, Class I, 24" Deep	63.0	28.6	2.5	.070
AC35242Q200303	Base: L-868C, Class I, 24" Deep	78.0	35.4	3.0	.085
20452-S234	Base: Shallow, Size B (for one lead RTEL)	25.0	11.3	0.8	.022
20452-S234A	Base: Shallow, Size B (for two lead RTEL)	25.0	11.3	0.8	.022
33004	Transformer L-830-4, 100 W 6.6/6.6 A	12.0	5.4	0.4	.011
33006	Transformer L-830-6, 200 W 6.6/6.6 A	16.0	7.3	0.4	.011
823KP-D4-D4	Connector Kit L-823, 8 AWG, .32" to .43" O.D.				
10047-1425	Heat Shrink Kit				

Renewal Parts

Part Number	Description	Part Number	Description
20496	Lamp 115 W	20253	Bottom Cover Assembly (2 Leads)
20538	Lamp 185 W	20257	Bottom Cover Assembly (1 Lead)
20268	Lamp 200 W	10047-409	Film Disc Cutout
20073-Y	Filter Assembly, Yellow		
20073-BR	Filter Assembly, Red		FAA Base Size C Only:
20073-BG	Filter Assembly, Green		
20148	Reflector	20261-XXX-XX*	Optical Assembly: 2 Leads
10035-33-274	O-Ring	20266-XXX-XX*	Optical Assembly: 1 Lead
10035-33-010	O-Ring	20183	Mounting Ring
21038	Lead Assembly	10000-365M	Bolt
19095	Socket	11A11-031D	Lock Washer
19096	Socket Holder		*Add lamp wattage and colors

