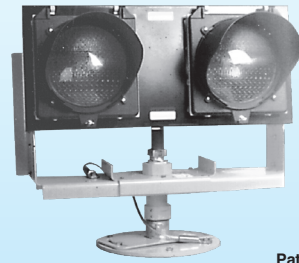




Runway Guard Light

Compliances: FAA AC 150/5345-46: L-804
ICAO Annex 14, Fig. A2-25



RGL

Patent No. Des. 403,263

Applications

The RGL (Runway Guard Light) is used to enhance the visibility of taxiway holding positions. Two RGL fixtures are installed at each end of the holding position line. Each fixture alternately flashes its two lamps.

Features



- ETL Certified L-804
- Uses two 100 W (PK-30d) quartz halogen lamps
- Adjustable light beam elevation with positive locking in one-degree increments
- Minimum average intensity exceeds 3000 candelas in traffic yellow
- Alternately flashes 45–50 times per minute
- Easy to maintain – no tools are required for relamping or replacing circuit cards
- External ON/OFF switch allows field relamping or circuit card replacement without de-energizing entire power loop (see option 1)
- High-strength frame and aluminum housing
- Base mounted with 2-inch frangible coupling
- Supplied with tether and 12-inch anti-rotation locking plate
- 300 MPH jet blast resistant
- Basic unit supplied with dry contact monitoring
- Computer control and monitoring available (see option 4)

Instruction Manual:	2520
Shipping Weight:	55 lbs. 25 kg
Shipping Volume:	7.22 cu. ft. 0.204 m ³

Ordering Information



Fixture Type:

Elevated:

RGL Model:

2 = Two 100w Lamps

Input Power:

066 = 6.6 Amp Series Circuit

Options:

1 = External ON/OFF switch, 6.6 A.

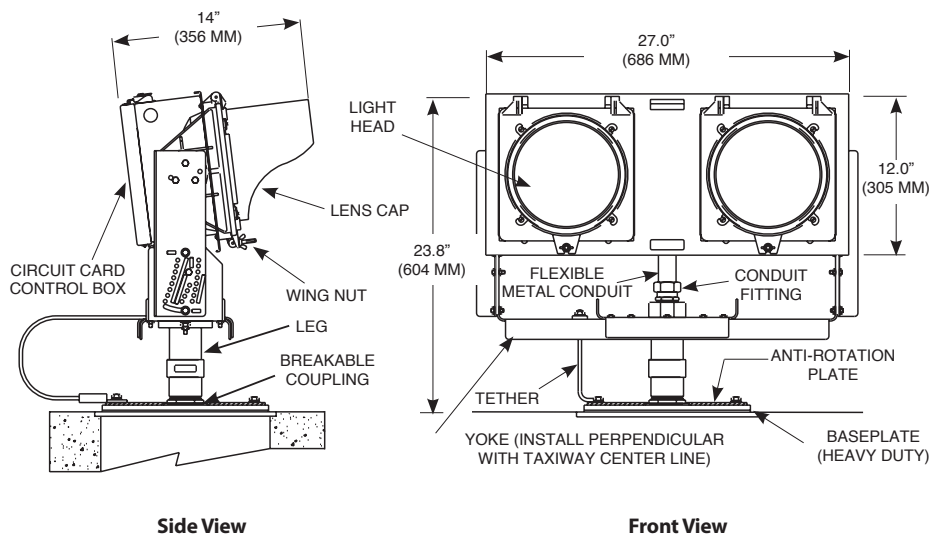
2 = Not available.

3 = Without monitoring feature.

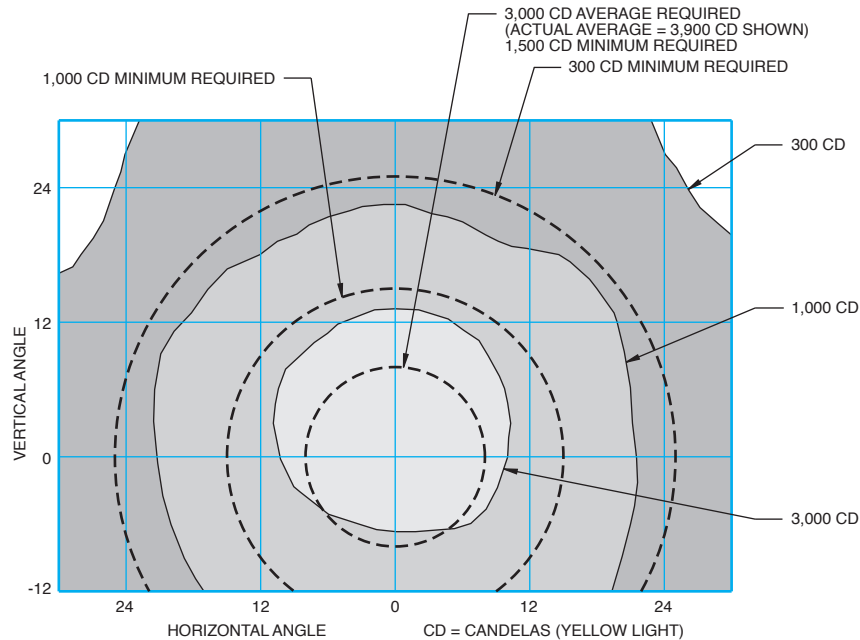
4 = Internal Logitrac digital control & monitoring (6.6 A series circuit only).

Consult sales for assistance.

5 = Anti-rotation plate for 16-inch diameter baseplate.



Typical Photometric Data



Typical photometric output of runway guard light, yellow, steady burning @ 6.6 amps (804E2-066 shown)

Accessories

Part Number	Description	Shipping Weight		Shipping Volume	
		lbs.	kg	cu. ft.	m ³
AC21242H200301	Base L867, Class I, 24" Deep	52.0	23.6	2.6	0.074
33004	Isolation Transformer, 100 Watts, 6.6/6.6 A	8.9	4.04	0.3	0.004
AP1832	Baseplate, 12" Diameter				
AP2832	Baseplate, 16" Diameter				

Renewal Parts*

Part Number	Description	Part Number	Description
10000-367	Circuit Card Mounting Screw	50260-1	Control Circuit Card, 6.6 A Units
10037-409	Male-Female Hex Standoff, for Units with Monitoring (except option 4)	50265-1	Monitor Circuit Card, 6.6 A Units (except option 4)
10047-2138	Lamp, 100 W, 6.6 A (PK-30d)	50276	Logitrac Mounting Plate (option 4 only)
10056-1752	Logitrac Circuit Assembly (option 4 only)	50500	Control Box Door Assembly (includes gasket, warning label, hinge half and strike)
50244	Anti-rotation Plate, 12"		
50244-1	Anti-rotation Plate, 16" (option 5 only)	60683-10A	Frangible Coupling
50255	Wire (group E replacement, option 4 only)	60984	Tether

* Traffic Visor, Traffic Signal Head and PC Weldment parts have changed as of June 2005. Consult factory for replacement availability.

