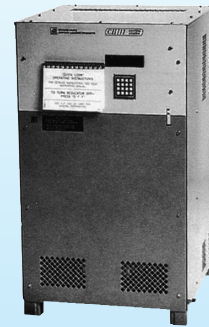


REGD

Constant Current Regulators-Dry

Compliances: FAA AC 150/5345-10: L-828 and L-829
ICAO Aerodrome Design Manual, Part 5
USN NAVAIR 51-50AAA-2

Small/4-10kW Unit




REGD

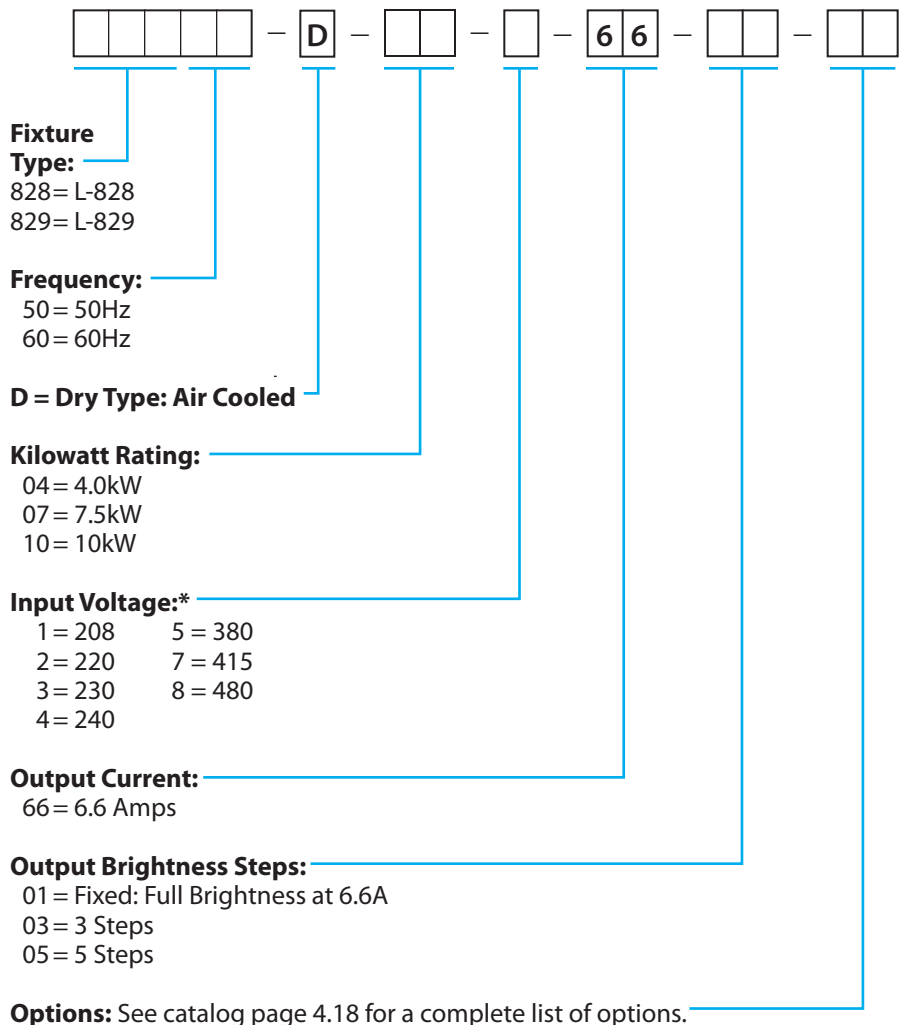
Applications

The REGD Constant Current Regulator is designed to provide precision control of runway lighting circuits. The equipment can be supplied with a wide range of control and monitoring options. These regulators are air cooled and designed for indoor service.

Features

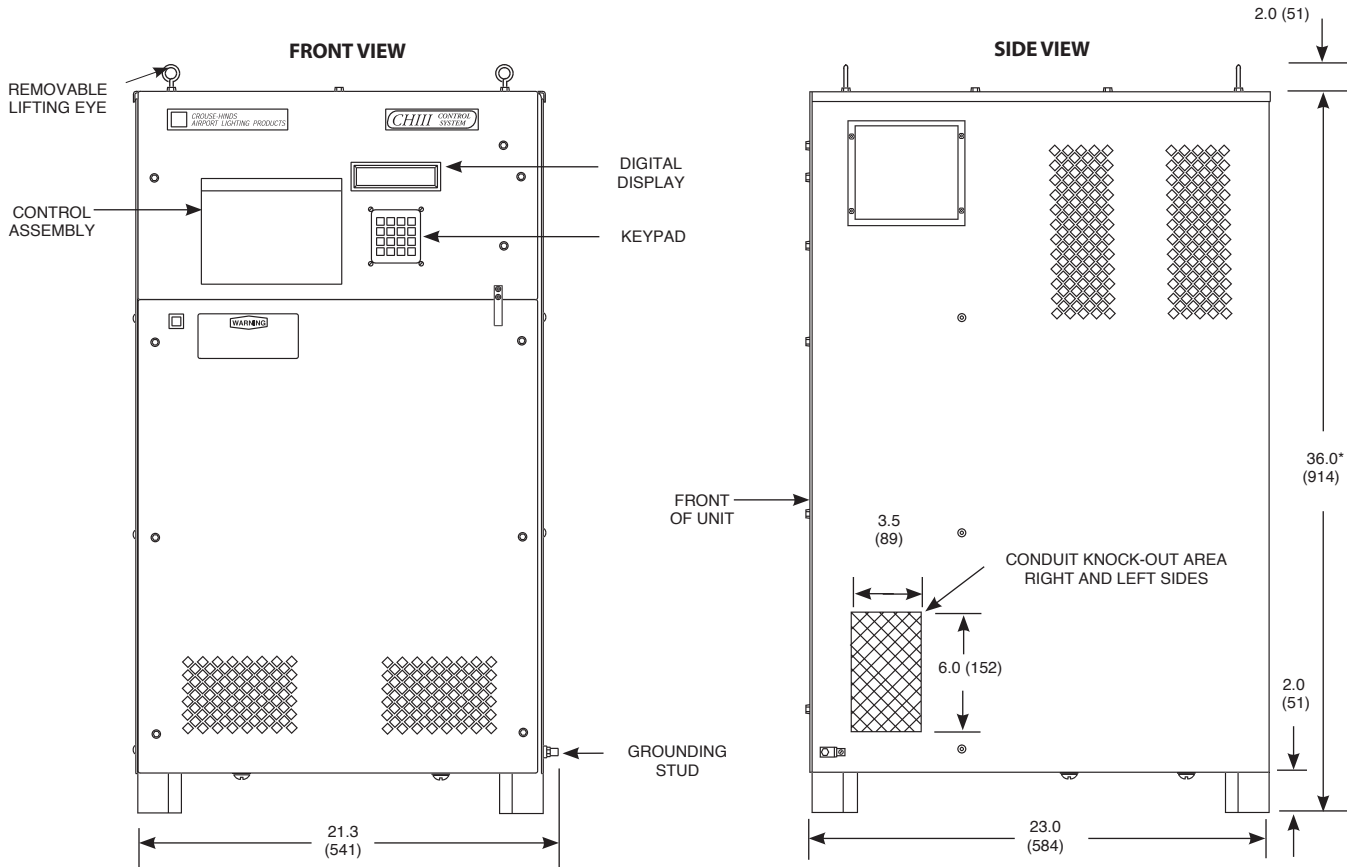
- ETL Certified 
- Air cooled
- Advanced Diagnostic Aids
- Series transformer type regulator
- Elapsed Time Indicator: each step and total
- Built-in digital ammeter (0.5% accuracy)
- Regulation $\pm 1\%$ over 0 to 100% load and +10% to -5% line voltage with no tap changes
- On-off switching under load
- Lightning and transient protection: input and output lines
- Efficiency – 90% minimum
- High power factor**
- Remote reset capability
- Output current maintained with 30% open isolation transformer secondaries
- Open circuit protection
- Over current protection
- Compatibility of Multiple Options
- Soft On/Off
- Integral L-829 Monitoring
- 10,000 feet remote control @ 120V
- Temperature – 40°C to +55°C
- Plug-in printed circuit boards
- Circuit board compatibility with large dry CCR***

Ordering Information



* Voltage Availability
50Hz only: 230, 380 60Hz only: 208, 480 50 or 60Hz: 220, 240
** When Fully Loaded
*** Field adjustments may be required.

Outline Drawing



* The unit with options 41, 42, 43, or 44 is 12" higher.

Technical Data

Brightness Step	REGD Output		Percentage (%)	
	Current (Amps)		Light Output	
	3-Step	5-Step	3-Step	5-Step
5	—	6.6	—	100
4	—	5.2	—	20
3	6.6	4.1	100	4.0
2	5.5	3.4	30	0.8
1	4.8	2.8	10	0.2

Note: For 10, 15, 20, and 30Kw shunt type REGD regulators, refer to catalog page 4.2.

Dimensions:	inches (mm)		
Instruction Manual:	9517		
	4Kw	7.5Kw	10Kw
Shipping Weight:	250 lbs. 114 kg.	325 lbs. 145 kg.	370 lbs. 168 kg.
Shipping Volume:	17.6 cu.ft. 0.50 cu.m.	17.6 cu.ft. 0.50 cu.m.	17.6 cu.ft. 0.50 cu.m.

Renewal Parts - 82X50-D/82X60-D Small Dry Regulators

Part Number	Description
32322 - "X"	L-828 Control Assembly
32322 - "X" -61	L-829 Control Assembly
Insert 1, 3, or 5 in place of "X" for the number of brightness steps required.	
10047-1005	Fuse, 1/8 Amp, Slo-Blo
10047-1205	Fuse, 1 Amp, Slo-Blo
31814	SCR/Heatsink Assembly, All units except noted by P/N 31817
31817	SCR/Heatsink Assembly, 208-240VAC, 10Kw units

