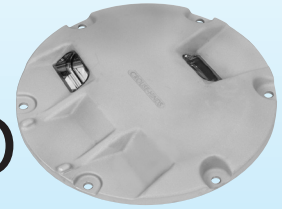


# PRO III™ IRELI

## Inset Runway Edge Light - ICAO

**IRELI**

Compliances: ICAO Annex 14: Fig. A2.10

### Applications

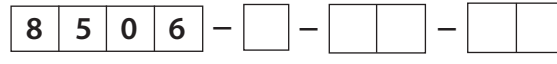
The IRELI is a high intensity bidirectional light (using two 105 watt lamps) or unidirectional light (using one 105 watt lamp). This fixture is used where taxiways intersect the runway and any other runway edge locations where it is impractical to use an elevated light.

### Features

- Low profile, .50" (12 mm)
- Few parts to stock
- Easy to maintain – no sealant required for prism
- Pressure test plug for seal integrity verification
- Long lamp life – Quartz Halogen, 105 W, 6.6 A

<b>Instruction Manual:</b>	2707
<b>Shipping Weight:</b>	17.0 lbs 7.7 kg
<b>Shipping Volume:</b>	0.6 cu ft 0.04 m3

### Ordering Information



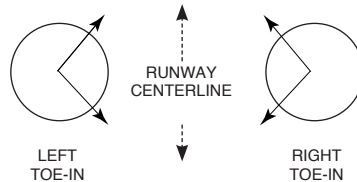
**Fixture Type:**  
850 = Runway  
6 = Model 6

**C-H Style:**  
A = ICAO Fig. A2.10

**Color:**  
CC = Clear  
CY = Clear/Yellow  
YC = Yellow/Clear  
YX = Yellow/Blank  
XY = Blank/Yellow  
CX = Clear/Blank  
XC = Blank/Clear

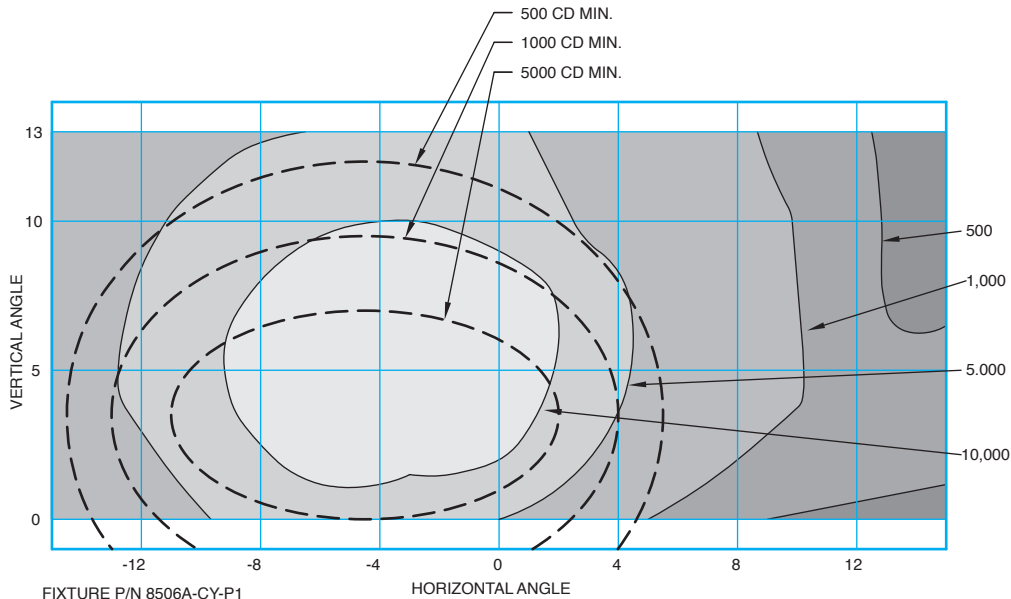
**L-823 Connection:**  
P1 = One plug  
P2 = Two plugs

\* Refer to the color symbol position:  
The first color is left toe-in;  
The second color is right toe-in.



### Fixture Type 8506A - 105 Watt MR-16 Lamp

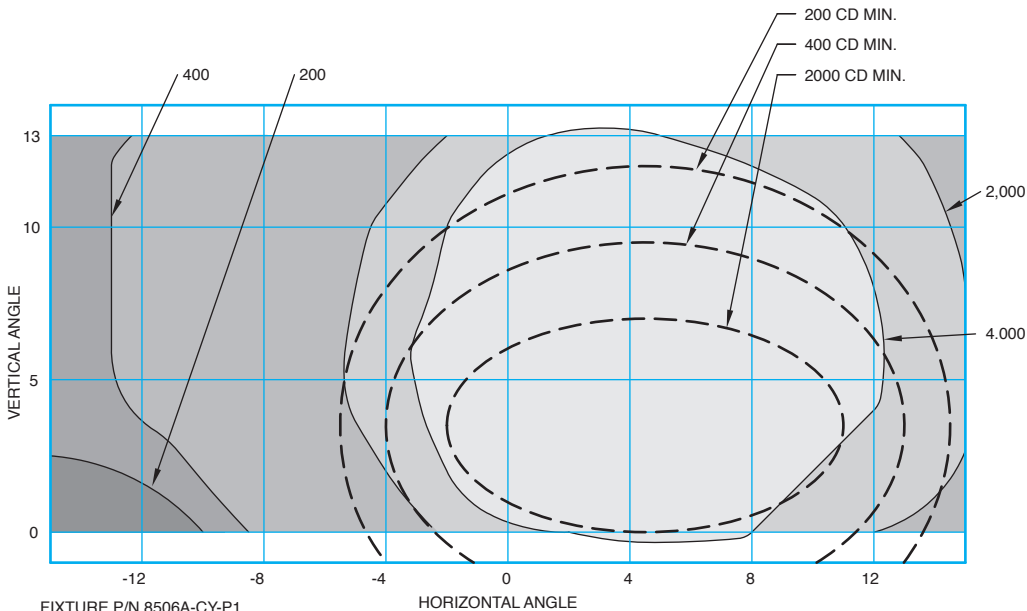
Function: ICAO Fig. 2.10



FIXTURE P/N 8506A-CY-P1  
 ICAO FIGURE 2.10, CLEAR  
 MAIN BEAM MINIMUM = 6,298 CD  
 MAIN BEAM MAXIMUM = 15,886 CD  
 MAIN BEAM AVERAGE = 11,352 CD  
 MAX/MIN RATIO: 2.52  
 105 WATTS

### Fixture Type 8506A - 105 Watt MR-16 Lamp

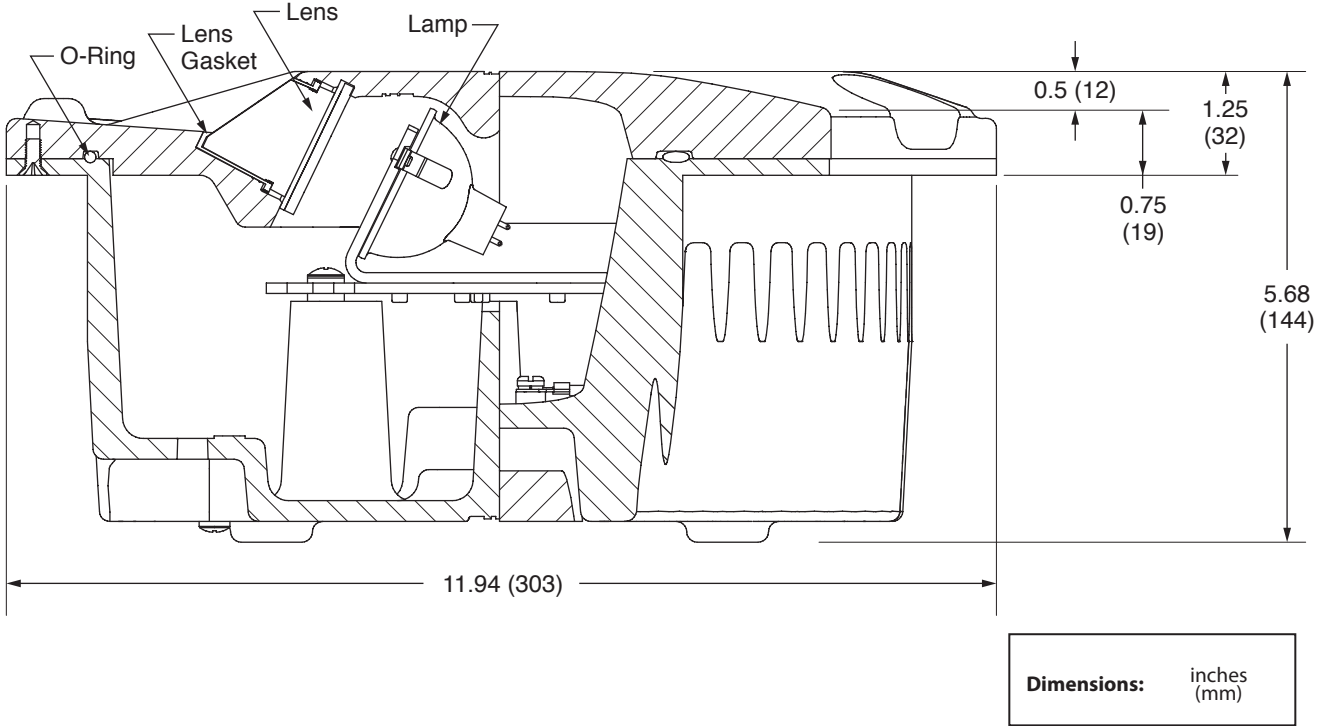
Function: ICAO Fig. 2.10, yellow



FIXTURE P/N 8506A-CY-P1  
 ICAO FIGURE 2.10, YELLOW  
 MAIN BEAM MINIMUM = 3,847 CD  
 MAIN BEAM MAXIMUM = 8,268 CD  
 MAIN BEAM AVERAGE = 6333 CD  
 MAX/MIN RATIO: 2.15  
 105 WATTS



Outline Drawing



Accessories

Catalog Number	Item Description	Catalog Number	Item Description
AC24242Q200303	Base: L-868B, Class I, 24" Deep*	823KP-D4-D4	Connector Kit – L-823, 8 AWG, .32" to .43" O.D.
33004	Isolation Transformer – 100 W, 6.6/6.6 A	10047-2154	Heat Shrink Kit – 1 Piece
33005	Isolation Transformer – 100 W, 20/6.6 A	10047-1425	Heat Shrink Kit – 2 Piece
33006	Isolation Transformer – 200 W, 6.6/6.6 A	19999	Lifting Tool
33007	Isolation Transformer – 200 W, 20/6.6 A		

Renewal Parts

Part Number	Description	Part Number	Description
21128	Lamp – 105 W, 6.6 A	10035-33-273	O-Ring – Bottom Cover
21321-C	Lens Replacement Kit – White		
21321-Y	Lens Replacement Kit – Yellow		

\* Fixture with total lamp wattage greater than 150W should not be mounted on 12" diameter bases less than 20 inches (500mm) deep. Class II bases are not recommended for this application.

Note:

1. Lens Replacement Kit includes lens, lens boot, lens retaining gasket, gasket lubricant, and lens retaining bracket and screws.