

ALSF



Flasher System



ALSF

Compliances: FAA AC 150/5345-51
SSALR (Type I)
ICAO ANNEX 14
TRANSPORT CANADA K312

Applications

Precision approach to runway in visibility conditions where the runway visual range (RVR), is less than one-half mile requiring steady-burning approach lights with sequence flashing lights.

The system consists of a master controller for monitoring and individual flashing lights that can be incorporated with steady burning lights to create various types of approach light systems such as the classic 21-position ALSF-1 or ALSF-2.

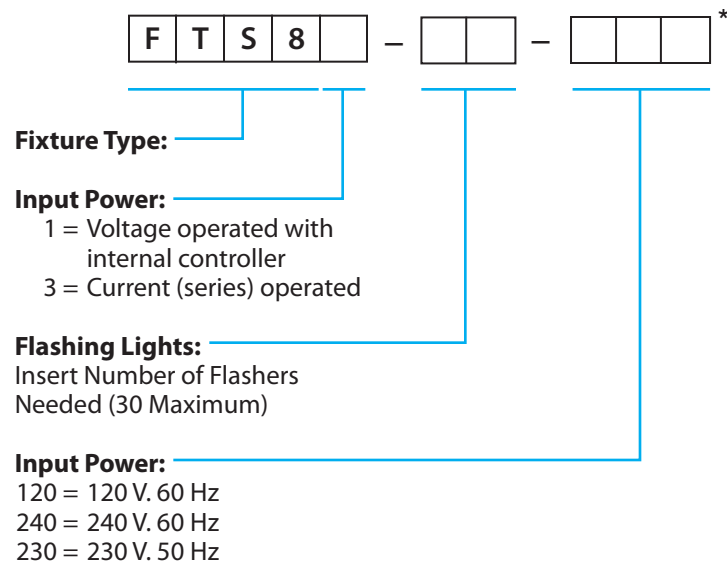
Flashhead and power converter may be mounted as one unit or individually to meet local terrain needs. Inset (surface mount) flashers are also available.

Other parts of the system, such as steady burning lights, towers, light bases, transformers and regulators must be ordered separately.

Features

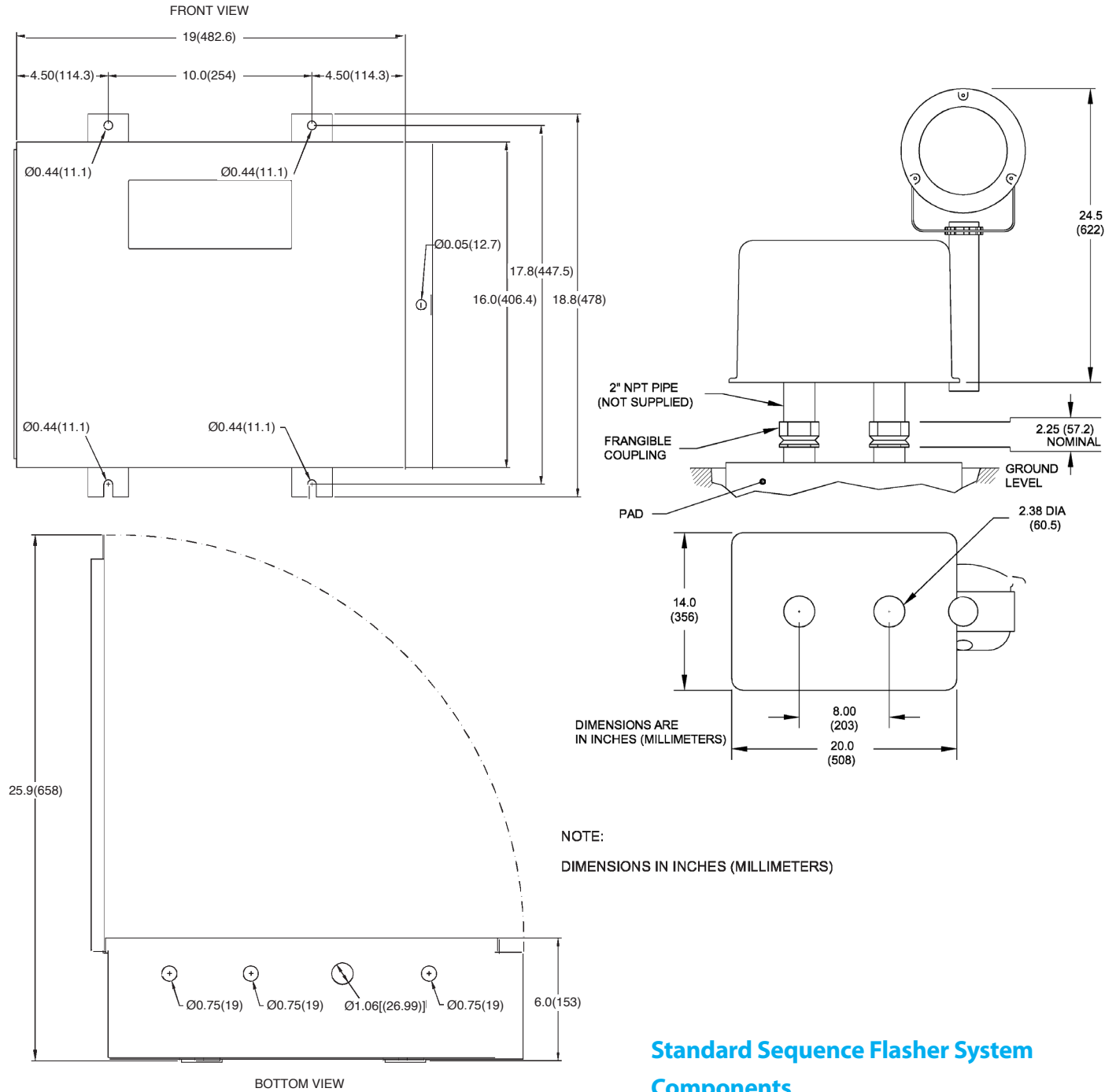
- ETL Tested and Verified
- Real-time dynamic fault detection and isolation
- Elapsed time metering (user-setable alarms)
- Standard input voltages 60 Hz 120 V, 240 V, 50 Hz-230 V
- Micro-processor control
- Transient protection
- Monitoring and dimming capability
- Local and remote control operation
- High-intensity default and failure detection, and caution indication
- NEMA 4 outdoor cabinet with locking provisions
- -55°C to +55°C operation
- Remote tower and vault control panels available
- Computer-control compatible (dry contacts)
- 120 Flashes per minute (factory calibrated)
- LED display
- FTC183 25 Watts, Average power consumption
- Can be installed up to 2500' from the approach system

Ordering Information



* FTS Series product are manufactured by Flash Technology, Franklin, TN.

Outline Drawings



NOTE:
DIMENSIONS IN INCHES (MILLIMETERS)

Instruction Manual:	FTC 183 / FTC 435
	Master Flasher
	Timer Power Supply
Shipping Weight:	29. lbs. 25. lbs.
	13. kg 11.3 kg

Standard Sequence Flasher System Components

Item*	Part Number
Fuse, Power, MDL2A	4900342
PCB100 Control Board	2471912
VRI Varistor 120 V	6901079
Relay, Alarm	4900501
PCB200 Panel Board	2472001

